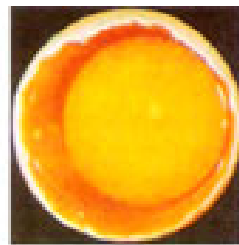
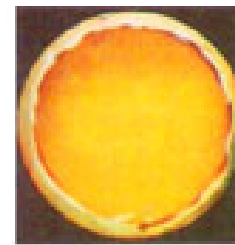




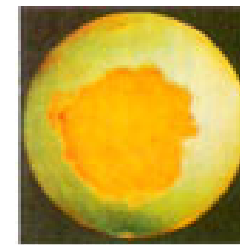
Infertile



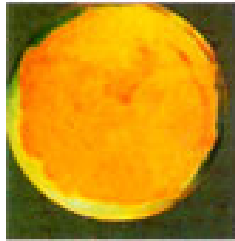
Fertile



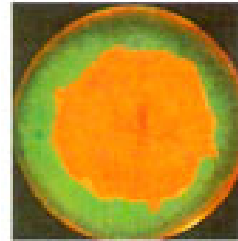
Positive Development



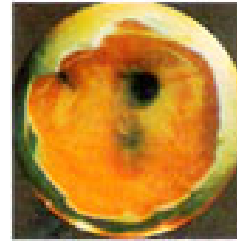
Early Dead (2 days)



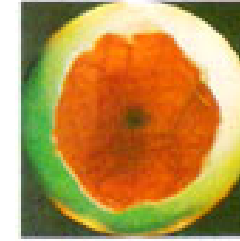
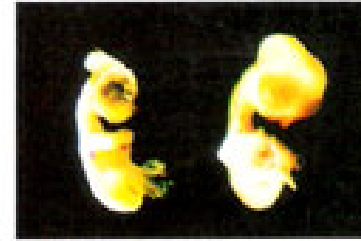
3 Days Dead



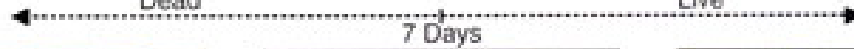
3 Days Live



Dead



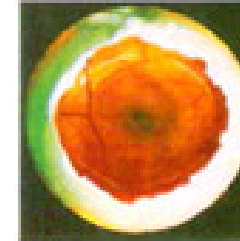
Live



Healthy Chick



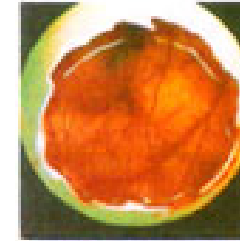
Dead



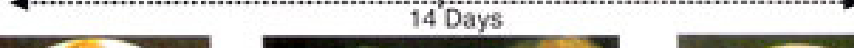
Live



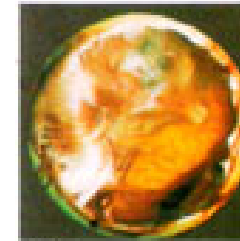
Dead



Live



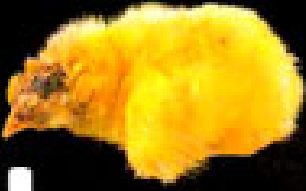
Dead





Live



Braina Hernia




H   High
Co₂-level



Cross Beak & Missing Eye



H  

Open Navel



H   H

Omphalitis



Contamination

Posterior Duplication



 Egg
handling

Red Hocks




 L


String Navel




H  L



Stubby Down



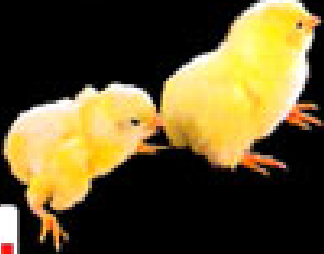
H  Nutritional
deficiencies



Sticky Down




H  L  L



Small Chick



H   L Too small eggs

Star Gazer



H   Genetic

Spraddled Legs



 H  Hatcher
baskets
too
smooth

Braina Hernia



H   High Co₂-level

Cross Beak & Missing Eye



H  

Open Navel



H   H

Omphalitis



Contamination

Posterior Duplication



 Egg handling

Red Hocks



 L

String Navel




H  L



Stubby Down



H  Nutritional deficiencies

Sticky Down



H  L  L

Small Chick



H   L Too small eggs

Star Gazer




H   Genetic

Spraddled Legs



 H  Hatcher baskets too smooth

Environmental Causes



H = too High
L = too Low
Humidity
Not Proper Turning